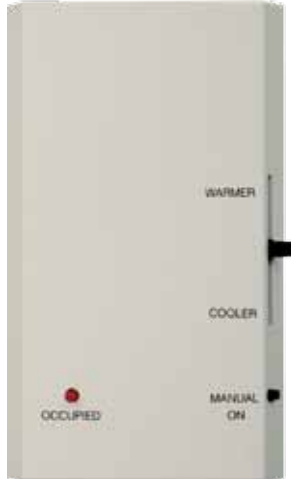


RS Sensor Line



RS Standard



RS Plus



RS Pro



RS Pro F

OEMCtr's line of intelligent sensors includes RS Standard, RS Plus, RS Pro, and RS Pro F for use with our controllers. The RS Pro and RS Pro F have a large LCD display and easy-to-use interface keypad. The RS Pro F adds fan control to the user interface as well as a mode selection button. The sensors provide precision measurement and communication capabilities in an attractive low profile enclosure. A hidden communication port provides access to the equipment for commissioning and maintenance.

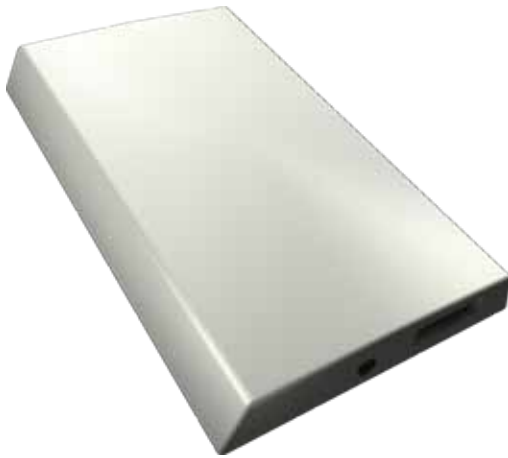
Key Features and Benefits

- Attractive low profile enclosure in a neutral color that complements any room.
- Large, easy-to-read LCD on the RS Pro and RS Pro F displays zone temperature, outside air temperature, heating setpoint, cooling setpoint, and local override (after-hours occupancy) time.
- Precise 10K ohm thermistor with + 0.36°F (0.2°C) standard accuracy and less than 0.18°F (0.01°C) drift over a ten year span requires no maintenance or re-calibration.
- Occupancy override that is fully programmable in Eikon®/LogicBuilder.
- Zone setpoints can be changed by pressing the Warmer or Cooler buttons. Adjustments are also fully programmable in Eikon®LogicBuilder.
- A hidden communication port allows a laptop computer or a BACview keypad to be connected to the control system.
- Multiple Room Sensors can be wired to one controller for temperature averaging or high/low select control. (One RS Pro or RS Pro F with up to four RS Standard sensors.)
- Mounts on a standard 2" x 4" electrical box for easy installation.

Features	RS Standard	RS Plus	RS Pro	RS Pro F
Low profile design, neutral color	✓	✓	✓	✓
Precise 10K ohm thermistor	✓	✓	✓	✓
Requires no maintenance or re-calibration	✓	✓	✓	✓
Hidden communication port	✓	✓	✓	✓
Can be daisy-chained to one controller	✓	✓	✓	✓
Mounts on a standard 2" by 4" electrical box	✓	✓	✓	✓
Convenient local setpoint adjustment		✓	✓	✓
Simple occupancy override		✓	✓	✓
Large, easy-to-read LCD			✓	✓
Easily changed zone setpoints			✓	✓
Fan speed control				✓

Specifications

Power	Supplied by the controller
Sensing Element	Precision Thermistor. Standard accuracy $\pm 0.35^{\circ}\text{F}$ (0.2°C) Less than $\pm 0.18^{\circ}\text{F}$ (0.1°C) drift over a 10 year period
Hardware Compatibility	All OEMCtrl controllers with Rnet capability
Wiring	Two pair twisted unshielded cable - 18 AWG, daisy, star, or hybrid
Communication	115 kbaud Rnet
Local Access Port	5 pin communications port for commissioning and maintenance of equipment
Weight	0.1 lbs. (.05 Kg)
Mounting	Wall or panel mounting; remote mounting up to 500 feet. Standard 2"x 4" electrical box may be used.
Overall Dimensions	2 3/4" (width) by 4 3/4" (height) by 5/8" (recommended panel depth). 70mm (width) by 120mm (height) by 16mm (recommended panel depth).



RS Standard



RS Plus



RS Pro



RS Pro F

