

# Touchscreen User Interface

# Equipment Touch

T

The OEMCTRL Equipment Touch is designed as an equipment HMI, a temperature sensor and a diagnostic tool, in one, compact interface. With screens programmed in ViewBuilder, the Equipment Touch's color LCD touch screen display can be used to provide a custom graphic interface for the control of your equipment. In addition the Equipment Touch provides a set of "built-in" features/screens that provide the following:

- Schedule Interface – view and edit a BACnet schedule
- Access Control – limit access to data based on credentials
- Alarm Viewing – view the device's alarm history buffer
- BACnet Object browser - of visible BACnet Objects
- Controller Status Screen - present device performance data
- Historical trending



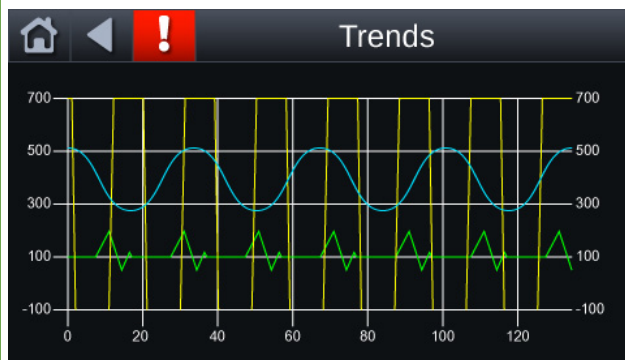
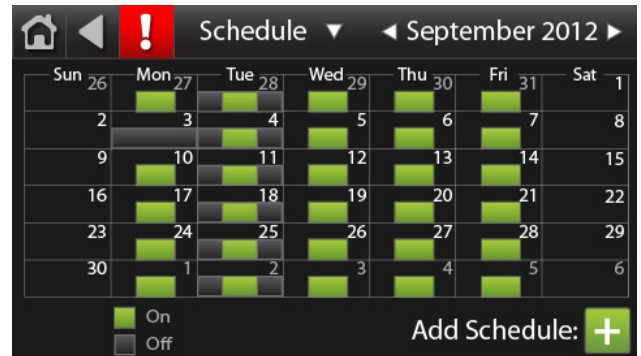
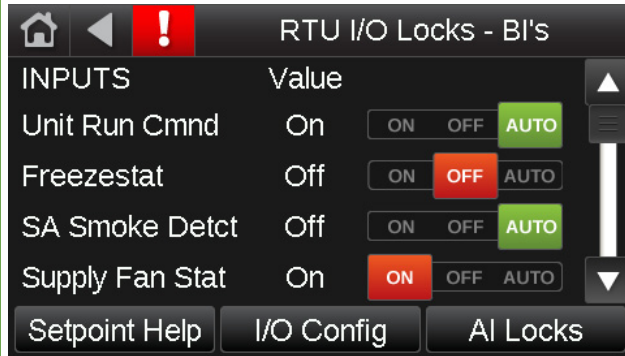
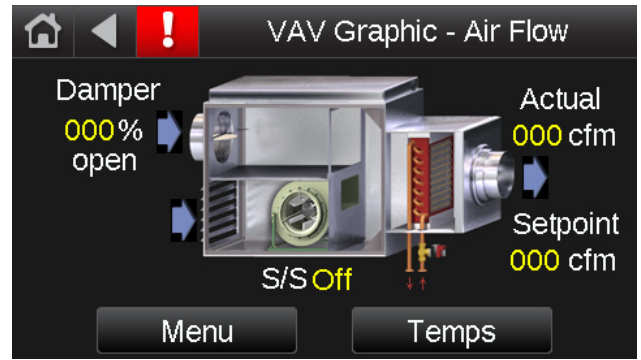
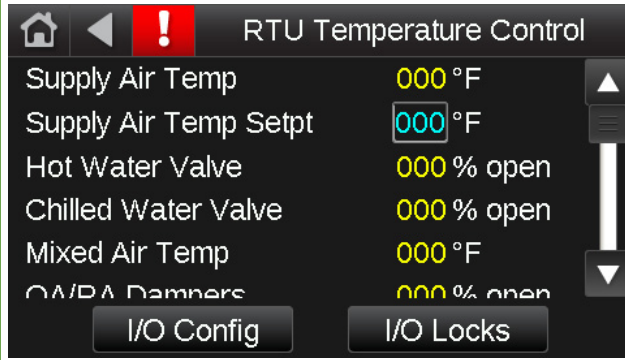
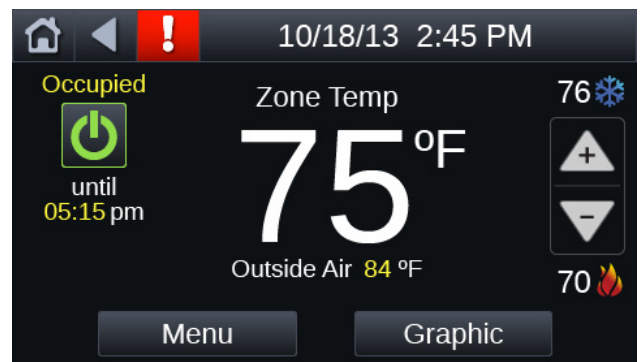
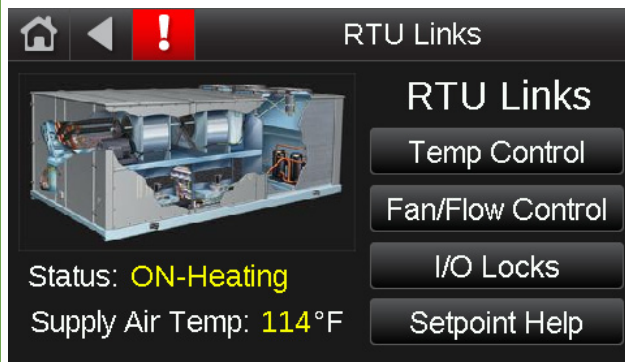
## Key Features and Benefits

- Automatically uploads and stores custom screens from the base controller
- On-board Temperature and Humidity Sensor
- Build up custom screens and navigation with access to virtually any data point in the equipment
- Supports 13 languages
- Supports graphics
- ViewBuilder tool includes library of interactive controls
- Equipment mount or Wall mount
- Real-time clock

## Specifications

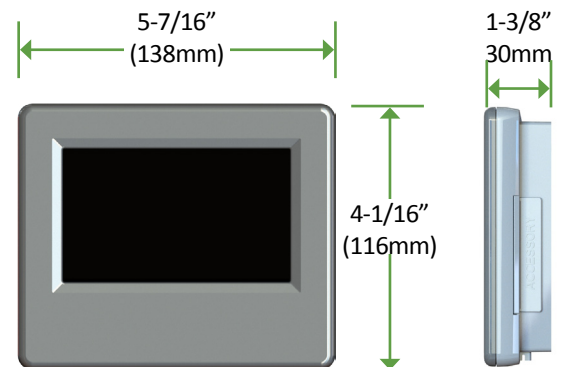
Power	24 Vac (±15%), 5 VA, 50-60 Hz, Class 2	
Backlit Color LCD Display	4.3" resistive touchscreen color LCD display with backlighting WQVGA 480x272 px	
Operating Range	-4° to 140°F (-20°C to 60°C), 10%-90% RH non-condensing	
Communication	<b>Rnet:</b> 2-wire EIA-485 port for connection to the Rnet sensor network (115 kbps)	
Memory	<ul style="list-style-type: none"> <li>• 16 MB Flash memory to store screen file.</li> <li>• 1.5 MB RAM to store variable data and LCD data.</li> <li>• 4 KB Serial EEPROM to store non-volatile configuration data.</li> </ul>	
Temperature sensor	Range @ 95% RH:	-4°F to 140°F (-20°C to 60°C)
	Range @ 20% RH:	-4°F to 194°F (-20°C to 90°C)
	Accuracy @ 25°C:	±0.4°C
	Accuracy over 20°C to 30°C:	±0.5°C
	Accuracy over 10°C to 45°C:	±1.0°C
	Accuracy over full range:	±2.5°C
	Resolution:	0.01°C
Humidity sensor	Range:	0 to 100% RH
	Accuracy over 20 to 80% RH:	±3.0% RH
	Accuracy over full range:	±5.0% RH
	Resolution:	0.05% RH
Listed by	UL-916 (PAZX), CE, FCC Part 15-Subpart B-Class A	

# Programming Flexibility



## Shown Above

- (1-5) Some sample custom screens
- (6) Schedule screen sample
- (7) Sample trends
- (8) Choose a language



1025 Cobb Place Boulevard . Kennesaw, GA 30144 . (770) 429.3060 . Fax (770) 429.3061 . www.oemctrl.com

(2/11), ©2011, OEMCtrl and the OEMCtrl logo are trademarks of OEMCtrl. All other trademarks are the property of their respective owners. A member of the United Technologies Corporation family. Stock symbol UTX